

ReCruit™ Topical

POWDERED EXTRACELLULAR MATRIX

Support **WOUND HEALING** with an advanced bioscaffold.

ReCruit™ Topical is a biologic powder that can be remodeled into vascularized tissue. The powder, which is micronized porcine small intestinal submucosa, is based on technology that has been used in human patients for more than a decade.¹ Now, this technology is available in veterinary care, and it's already making an impact.



Day 0

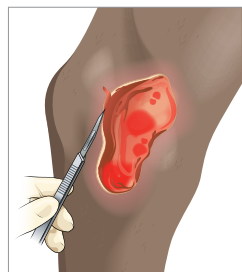


Day 61

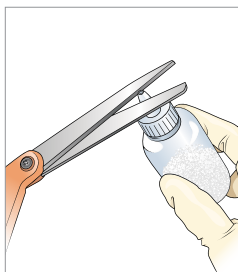
A cat, Spitfire, had a degloving injury on her leg after she was hit by a car.

61 days after the first application of ReCruit Topical, she could use and walk on her leg.

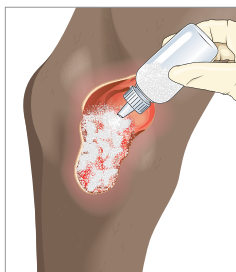
How to apply ReCruit Topical



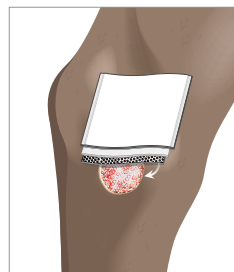
1. Ensure the wound bed is free of debris and necrotic tissue. Irrigate excessive exudate and control the bleeding. Rinse the wound with sterile saline.



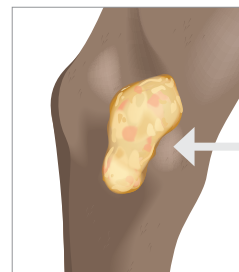
2. Trim the spout of the ReCruit Topical bottle with scissors.



3. Lightly cover the entire wound surface with the ReCruit Topical powder. If needed, gently wet the application area with sterile saline to help the product adhere.



4. Apply a nonadherent secondary wound dressing over the product. Apply any additional dressing, as needed, to manage wound exudate. Only change the dressing when necessary, typically every seven days. Avoid dislodging the product when you change the secondary dressing.



5. Reapply as necessary. The product can be reapplied every seven days by repeating the previous application steps.

As the healing occurs, the powder may darken in color and form a caramel-colored gel. This gel is normal. **Do not remove it.**

COOK®
ANIMAL HEALTH

Disclaimer: The techniques presented in this guide are recommendations that should help you achieve optimum results, but this guide is not meant to be a substitute for the instructions for use.
1. Hodde JP, Allam R. Small Intestinal Submucosa Wound Matrix for Chronic Wound Healing. Wounds. 2007;19(6):157-162.

Call **833.542.4963** to find out more.

ReCruit™ Topical

POWDERED EXTRACELLULAR MATRIX (ECM)



Attention, see
instructions
for use



Use-by
date



Keep dry



Temperature
limit



Do not
re-use



Sterilized
using ethylene
oxide

DESCRIPTION

Recruit Topical is an advanced wound care device composed of powdered porcine collagen. ECM material is obtained from porcine small intestine in a manner that removes all cells, but leaves the naturally fibrous and porous matrix. The careful processing leaves intact the complex ECM, which provides a scaffold for cellular invasion, capillary ingrowth and maintains and supports a healing environment for wound management. Recruit Topical is provided sterile in bottles and is intended for one-time use.

INTENDED USE

Recruit Topical is indicated for veterinary use in the management of wounds, including: partial and full-thickness wounds, pressure ulcers, chronic ulcers, tunneled, undermined wounds, surgical wounds (donor sites/grafts, post-Moh's surgery, post-laser surgery, distal limb/foot, wound dehiscence), trauma wounds (abrasions, lacerations, second-degree burns, and skin tears) and draining wounds.

This product is intended for veterinary use only. This product is not intended for human use. This product is intended for companion animals only. This product is not for use in food producing animals.

CONTRAINDICATIONS

This device is derived from a porcine source and should not be used in patients with known sensitivity to porcine material.

PRECAUTIONS

- This device has not been evaluated for use in third degree burns.
- This product is designed for single use only. Attempts to re-process, resterilize and/or reuse may lead to product failure and/or transmission of disease.
- Product is sterile if the package is dry, unopened and undamaged. Do not use if the package seal is broken.
- The product must be used prior to the expiration date.
- Discard product if mishandling has caused possible damage or contamination.
- The product should not be applied until excessive exudate, bleeding, acute swelling and infection is controlled.

POTENTIAL COMPLICATIONS

The following complications are possible in the management of wounds.

- Infection
- Chronic inflammation (initial application of product may be associated with transient, mild, localized inflammation.)
- Allergic reaction
- Excessive redness, pain, swelling or blistering

If any of these conditions occur, consider discontinuing use of the product.

STORAGE

This product should be stored in a clean, dry location at room temperature.

STERILIZATION

This product is provided sterile using ethylene oxide.

INSTRUCTIONS FOR USE

Note: Always handle product using aseptic technique.

Required Materials:

- Sterile saline
- Wound dressing

Wound Preparation

1. Prepare wound area using standard-of-care methods to ensure wound is free of debris and necrotic tissue. If necessary, surgically debride and treat the wound bed with standard-of-care techniques to ensure the wound shows granulation tissue and wound edges contain viable tissue.
2. Irrigate excessive exudate and control bleeding.
3. Rinse wound with sterile saline.

Product Preparation

1. Remove bottle and dispensing cap from pouch.
2. Remove seal from bottle neck and attach the dispensing cap.
3. Remove red spout tip and trim spout with scissors to achieve desired opening for dispensing product.
4. Replace red spout tip until ready to use.

Product Application

1. Apply product to wound surface by dispensing from the bottle to lightly cover the entire wound.
2. If necessary, gently wet the application area with sterile saline to ensure the product adheres to the wound.
3. Apply an appropriate non-adherent secondary wound dressing over the product.
4. If appropriate, apply a bandage system, total contact cast or other appropriate dressing that will manage the wound exudate.

Note: Keep the product and wound bed moist.

Dressing Changes

1. To prevent damage to the newly incorporating product, only change the secondary dressing as necessary, typically every 7 days.
2. Take care to avoid disturbing the wound bed when the secondary dressing is changed.

Reapplication of Product

Note: If a gel forms on the wound surface, do not attempt to forcibly remove it. Successful absorption of ECM may result in formation of a caramel-colored or off-white gel. Do not remove this gel by debridement. This caramelization contains ECM, which will continue to supplement the wound as it heals.

1. Carefully remove any remaining loose powder around the wound edges as needed.
2. Gently cleanse the wound surface with sterile saline; leave the ECM gel intact.
3. If the wound is free of infection and debris but not fully epithelialized, reapply the product to unhealed area (see section "Product Application").

The product can be reapplied every 7 days as by repeating the product preparation and application steps.