

ReCruit™ Topical

POWDERED EXTRACELLULAR MATRIX



SPECIES	Dog
BREED	Australian Shepherd
AGE	10 years
SEX	Female (spayed)
INJURY	Dog bite wound
TREATMENT	3 total applications of ReCruit™ Topical
RESULTS	Complete wound closure (scabbing) with hair regrowth 30 days after initial application.

CLINICAL EVALUATION

Libby case study

The product was applied to what type of wound?

The wound consisted of skin necrosis with a large portion of skin unattached from the top of the skull to the base of the skull and over to the left ear. She suffered the injury during a fight with her owner's other 2 dogs.

How was the wound prepared?

Due to the severity of the wound and facultative myiasis on the caudal portion, Libby immediately received IV fluids, an injectable pain medication, and oral antibiotics before mechanical debridement was performed at an emergency clinic. The next morning, Libby was transferred to her general veterinarian where the wound was cleaned with 3% chloroxynol surgical scrub and managed with wet to dry bandages for 3 days to ensure that infection was under control. The first application of ReCruit Topical was applied on day 3 (April 29, 2019).

How was the product applied?

The product was applied as a thin layer covering the entire wound. The wound was bandaged with a non-stick bandage and left for 7 days. No e-collar was used.

Were bandage changes needed?

Yes—the first bandage change was performed on day 7, and the bandage was changed again on day 14.

How many applications of the product were needed?

Three applications were required.

Did the patient experience any complications due to the product?

No, and it was noted by Dr. Crook that Libby seemed unphased by her working on the wound and she received No local anesthetic or pain medications at any point during check-ups.

How did the product perform?

Great, according to Dr Crook the wound healed much faster than she would have expected or had ever seen in her 25 years of being a veterinarian.

To read other clinical evaluations visit:

CookAnimalHealth.com/ReCruit



DAY 1

1st ReCruit™ and bandage application.



DAY 7

2nd ReCruit™ application and bandage change.



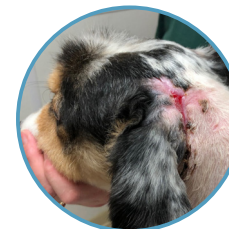
DAY 14

3rd ReCruit™ application and bandage change.



DAY 21

Check-up



DAY 30

Check-up

COOK[®] ReCruit™ Topical

ANIMAL HEALTH POWDERED EXTRACELLULAR MATRIX

Order Number	Reference Part Number	Powder weight	Quantity
G57456	VET-PWD-T-1G	1 gram per bottle	one bottle or box of 6 bottles

Ordering information

To establish an account with Cook Animal Health visit our website cookanimalhealth.com, click on “Create Customer Account” and follow the instructions. You can print the forms from this page. The text boxes are interactive so you can fill out page #2 and then print or print as is and write in the information.

Cook Animal Health

501 N. Rogers St.
Suite A
Bloomington, Indiana
47404

CookAnimalHealth.com

Phone:
833.542.4963 opt.3

Email:
CAH.Orders@CookAnimalHealth.com

ReCruit™ Topical

POWDERED EXTRACELLULAR MATRIX (ECM)



DESCRIPTION

ReCruit Topical is an advanced wound care device composed of powdered porcine collagen. ECM material is obtained from porcine small intestine in a manner that removes all cells, but leaves the naturally fibrous and porous matrix. The careful processing leaves intact the complex ECM, which provides a scaffold for cellular invasion, capillary ingrowth and maintains and supports a healing environment for wound management. ReCruit Topical is provided sterile in bottles and is intended for one-time use.

INTENDED USE

ReCruit Topical is indicated for veterinary use in the management of wounds, including: partial and full-thickness wounds, pressure ulcers, chronic ulcers, tunneled, undermined wounds, surgical wounds (donor sites/grfts, post-Moh's surgery, post-laser surgery, distal limb/foot, wound dehiscence), trauma wounds (abrasions, lacerations, second-degree burns, and skin tears) and draining wounds.

This product is intended for veterinary use only. This product is not intended for human use. This product is intended for companion animals only. This product is not for use in food producing animals.

CONTRAINDICATIONS

This device is derived from a porcine source and should not be used in patients with known sensitivity to porcine material.

PRECAUTIONS

- This device has not been evaluated for use in third degree burns.
- This product is designed for single use only. Attempts to re-process, resterilize and/or reuse may lead to product failure and/or transmission of disease.
- Product is sterile if the pouch is dry, unopened and undamaged. Do not use if the pouch seal is broken.
- The product must be used prior to the expiration date.
- Discard product if mishandling has caused possible damage or contamination.
- The product should not be applied until excessive exudate, bleeding, acute swelling and infection is controlled.

NOTE: For severe wounds or uncontrollable bleeding, consult a licensed veterinarian immediately.

POTENTIAL COMPLICATIONS

The following complications are possible in the management of wounds.

- Infection
 - Chronic inflammation (initial application of product may be associated with transient, mild, localized inflammation.)
 - Allergic reaction
 - Excessive redness, pain, swelling or blistering
- If any of these conditions occur, consider discontinuing use of the product and consult a licensed veterinarian.**

STORAGE

This product should be stored in a clean, dry location at room temperature.

STERILIZATION

This product is provided sterile using ethylene oxide.

INSTRUCTIONS FOR USE

Note: Always handle product using aseptic technique.

Required Materials:

- Sterile saline
- Wound dressing

Wound Preparation

1. Clean wound area to ensure wound is free of debris and dead or decaying tissue. Ensure wound has a grainy surface texture and wound edges contain viable tissue.
2. Flush wound to remove excessive exudate and control bleeding.
3. Rinse wound with sterile saline.

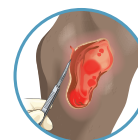
Product Preparation

1. Remove bottle and dispensing cap from pouch.
2. Remove seal from bottle neck and attach the dispensing cap.
3. Remove red spout tip and trim spout with scissors to achieve desired opening for dispensing product.
4. Replace red spout tip until ready to use.

Product Application

1. Apply product to wound surface by dispensing from the bottle to lightly cover the entire wound.
2. If necessary, gently wet the application area with sterile saline to ensure the product adheres to the wound.

How to apply ReCruit™ Topical



STEP ONE

Ensure the wound is free of debris and dead or decaying tissue. Irrigate excessive exudate and control the bleeding. Rinse the wound with sterile saline.



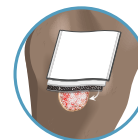
STEP TWO

Trim the spout of the ReCruit Topical bottle with scissors.



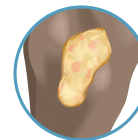
STEP THREE

Lightly cover the entire wound surface with the ReCruit Topical powder. If needed, gently wet the application area with sterile saline to help the product adhere.



STEP FOUR

Apply a non-stick secondary wound dressing over the product. Apply any additional dressing, as needed, to manage wound exudate. Only change the dressing when necessary, typically every seven days. Avoid dislodging the product when you change the secondary dressing.



STEP FIVE

Reapply as necessary. The product can be reapplied every seven days by repeating the previous application steps.

As the healing occurs, the powder may darken in color and form a caramel-colored gel. This gel is normal. **Do not remove it.**

3. Apply an appropriate non-stick secondary wound dressing over the product.
4. If appropriate, apply a bandage system, total contact cast or other appropriate dressing that will manage the wound exudate.
Note: Keep the product and wound bed moist.

Dressing Changes

1. To prevent damage to the newly incorporating product, only change the secondary dressing as necessary, typically every 7 days.
2. Take care to avoid disturbing the wound bed when the secondary dressing is changed.

Reapplication of Product

Note: If a gel forms on the wound surface, do not attempt to forcibly remove it. Successful integration of ECM may result in formation of a caramel-colored or off-white gel. Do not remove this gel by debridement. This caramelization contains ECM, which will continue to supplement the wound as it heals.

1. Carefully remove any remaining loose powder around the wound edges as needed.
2. Gently cleanse the wound surface with sterile saline; leave the ECM gel intact.
3. If the wound is free of infection and debris but not fully epithelialized, reapply the product to unhealed area (see section "Product Application").

The product can be reapplied every 7 days as by repeating the product preparation and application steps.

